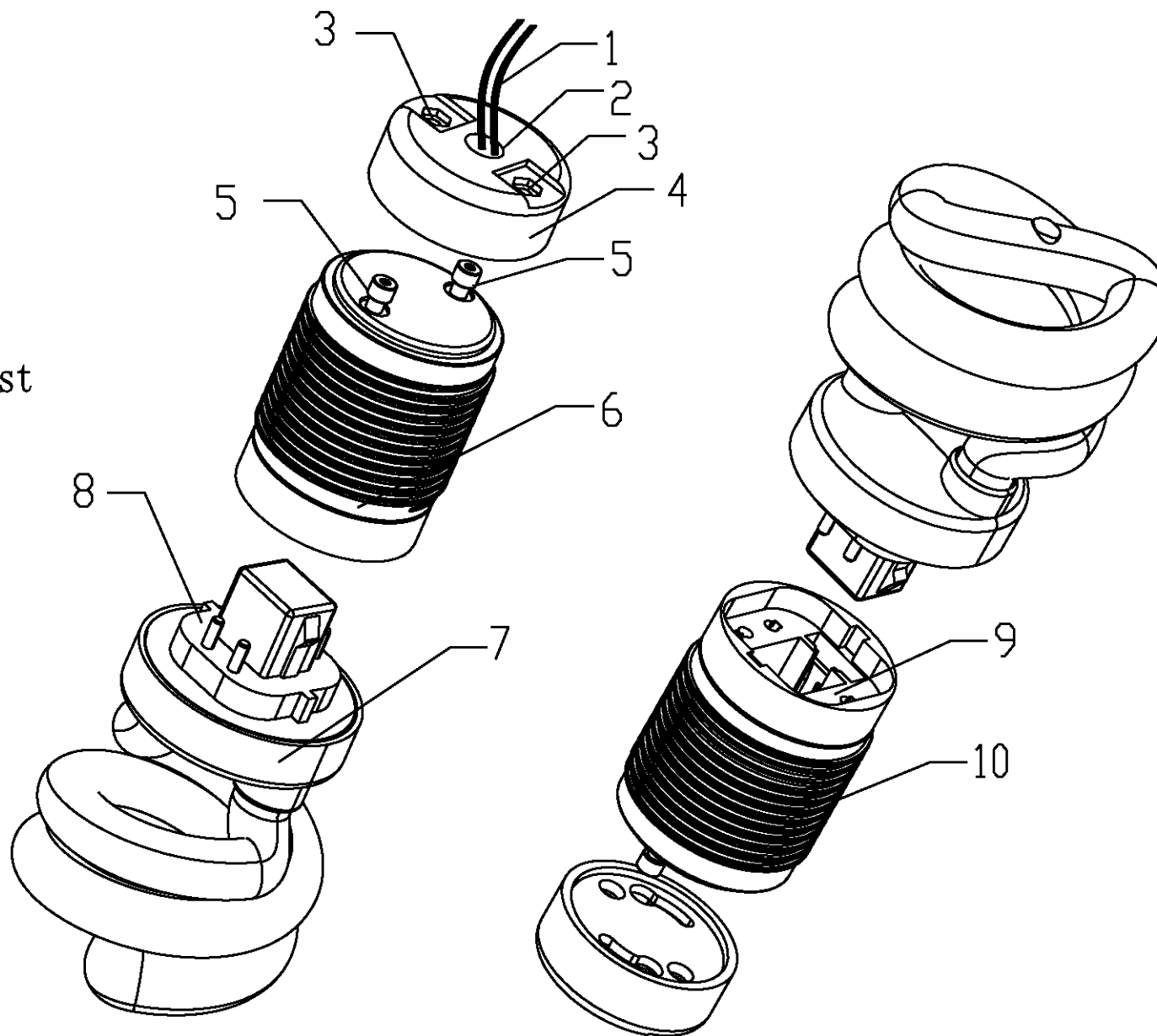


The ballast design was NOT part of the competition. The recommended design is for the line voltage socket ONLY

1. Lead Wire
2. Fixing Hole I
3. Fixing Holes II
4. Base
5. Prongs
6. Replacement Ballast
7. Replacement Lamp
8. Lamp Base
9. Lamp Holder
10. Thread



COMPANY NAME:	
COMPANY BRAND:	
WEBSITE:	